



DMZ-12308

2005 to 2021 Tacoma short bed Bolt on Bed Cage Install Notes

Installing The Bed Cage

Thank you for purchasing the DMZ Tacoma short (5') bed Bolt / weld on bed cage. The installation of this bed cage is pretty straightforward, as it locates on the 2 front bed mount bolts.

***Please read and understand all of these instructions before starting the job!**

***Required Tools.** Tape measure or ruler, drill motor, 3/8" drill bit, 9/16" wrench and a socket and ratchet, body saw or some way to cut the shock holes in bed, some sort of a sander for paint removal (if welding lower legs on), welding machine (if welding lower legs on).

***The first thing you are going to do is, from under the bed, measure the bed to make sure that it is fairly centered on the frame and hasn't been moved off center.**

*** Now, you can remove the front 2 bed mount bolts and set the bed cage into the bed.**

*** There is a little extra space on the lower leg tabs to help you center the cage in the bed. To do so, reinstall the front bolts loosely, and then measure from the front of the main tube to the front of bed, and from the side of the bed rail to the cage side tubes. You just want to make sure that the measurements are fairly even, so it looks right from the top, and the lower legs will fit right when you install them.**

*** Once the bed and cage are centered, you can carefully tighten the front bed bolts to hold everything in place while you drill the holes through the bed for the lower legs. Using the bed cage flanges for a guide, use a 3/8" drill bit to drill through the holes in the bed cage flanges (16 holes total).**

***The lower legs can either be welded or bolted on. If the legs will be welded on (preferred, especially if you are planning on a frame boxing kit as well), you will need to clean the paint off the frame where you will be welding the lower leg flanges to the frame. If you choose to bolt the lower legs on, it is recommended to enlarge the flange holes on the frame end of the lower legs to 3/8" and pick up some grade 8 bolts, nuts, and washers, to attach the legs to the frame.**

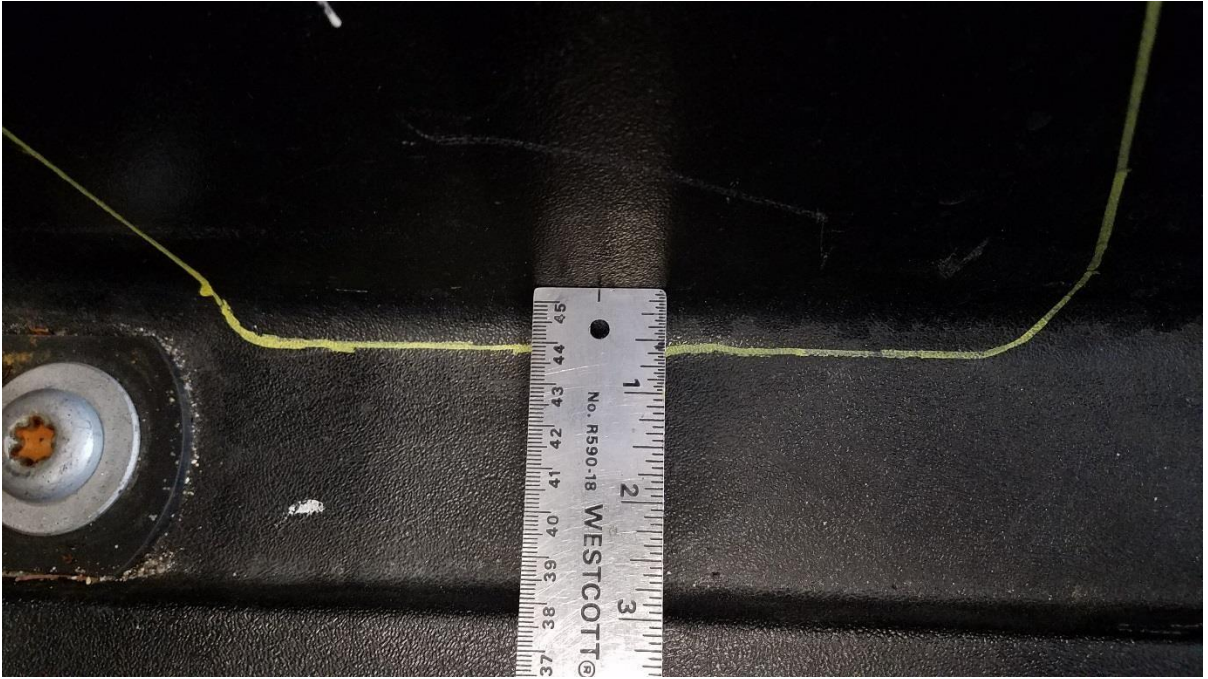
Shock Hole Placement and Cutting

- *Use the provided template and the following reference pics, to mark your bed for cutting. (Note; when you print the template, be sure to print it on legal size paper, so it will be the correct size.) (Also note that the template is printed driver's side up, just flip it over for the passenger side.)
- * Once the bed is marked and you have verified the measurements from side to side, you can cut out the holes. We have found it easiest to temporarily remove the cage to make cutting easier and more accurate. We have also found that a Harbor Freight body saw or similar type saw to be the easiest and most accurate to make the cuts. (Note: The shock hole template is a starting point, and it is recommended to cycle the suspension with the shocks installed to ensure there is no interference.)
- * Shock placement. Since different brands of shocks have different size misalignment spacers and bypass tube layouts, our bed cage comes with six $\frac{1}{4}$ " spacers for the upper shock bolts. Use these spacers to position your shocks so that the shock is as close to the frame as possible, but not closer than $\frac{1}{2}$ " to the frame when the suspension is at droop. Meaning that no part of the shock body or bypass tubes can be closer than $\frac{1}{2}$ " to the frame at droop, to avoid interference and possible shock damage. You may not need all of the spacers depending on your brand of shocks, just make sure that there is no play when the shocks are installed and everything is tight. If your shocks have an undesirable tube layout, they still may be able to be used, but you may have to notch and plate the frame for clearance. (You can call us for more info on frame notching and plating if you need to.)

Reference pics for placement of shock cut out template.



Measured from front of bed



Measured at bed floor.



Example of a finished cutout.

If you have any questions, please give us a call (951)371-8500

PRINT ON LEGAL SIZE PAPER

**CUT OUT TEMPLATE AND
TRACE CUT LINE ONTO BED**

**DRIVER SIDE TOP.
FLIP TEMPLATE FOR
PASSENGER SIDE**

**SHORT BED 2ND & 3RD GEN TACOMA
ROUGH SHOCK HOLE CUTOUT TEMPLATE**



6 1/2" FROM FRONT OF BED.

